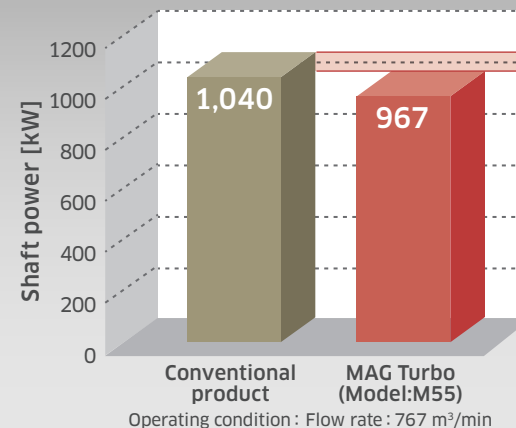


MAG Turbo (Model:M55)

Aeration blower with top level of energy saving performance at sewage treatment plants

By adopting a high-voltage, large-capacity high-speed drive system (frequency inverter, active magnetic bearings & high speed permanent magnetic motor) and newly developed impeller, MAG Turbo (M55) enables energy saving operation.



Difference: 73kW
= 7% reduction

In case of
24 hours operation

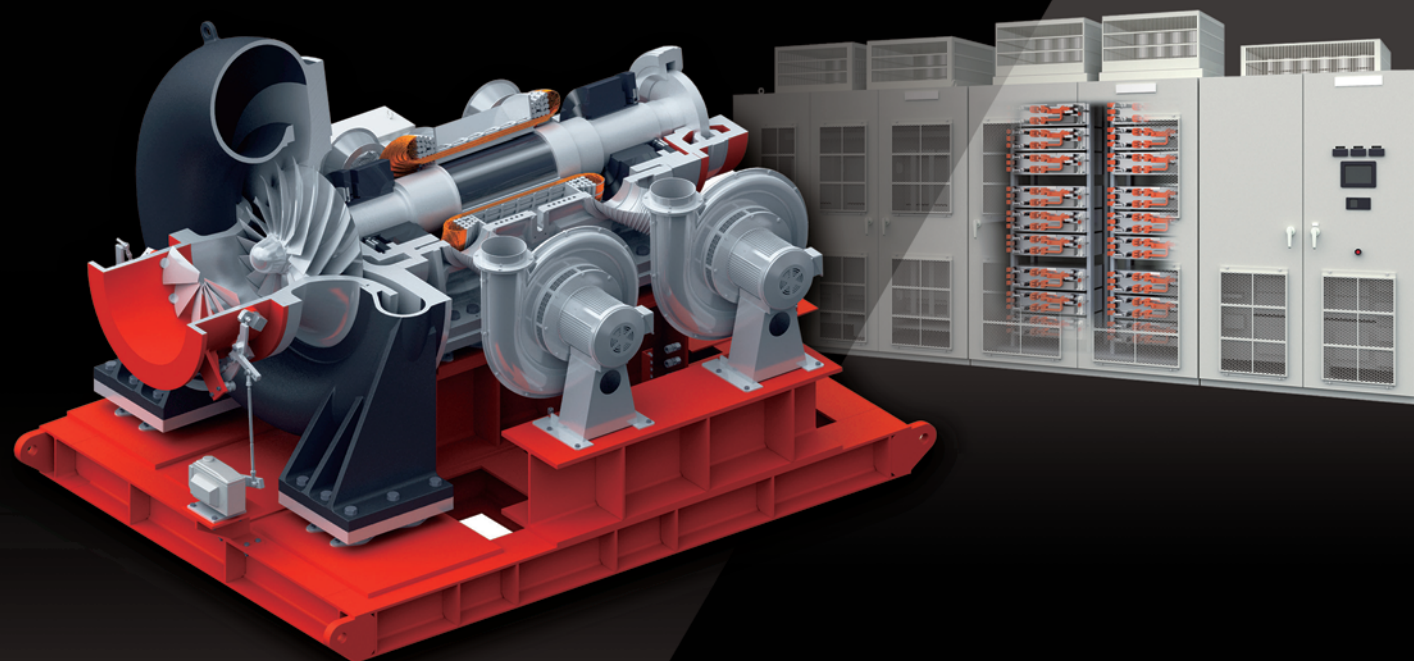
Differences in
electric energy:
1,752kWh per day



2024

Kawasaki
Ecological Frontiers
S class

Initial registration: 2021



Product Description

MAG Turbo (M55) is aeration blower model for sewage-treatment plants that significantly expands capacity of air volume and power from the other MAG Turbo models.

Features

- By applying frequency inverter, active magnetic bearings and high speed permanent magnetic motor, MAG Turbo (M55) has following 3 features
 - High efficiency
 - Oil free
 - Low noise, low vibration