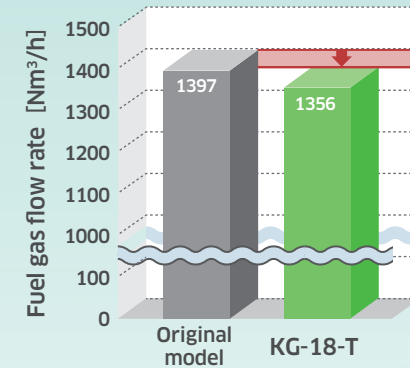


# Kawasaki Green Gas Engine KG-18-T

Reducing fuel gas consumption significantly by world's best electrical efficiency in same engine power generation output class

KG-18-T achieved world's best electrical efficiency 51.0% by installing 2-stage turbo charging system. Reduction of fuel gas consumption can also reduce the CO<sub>2</sub> emissions.

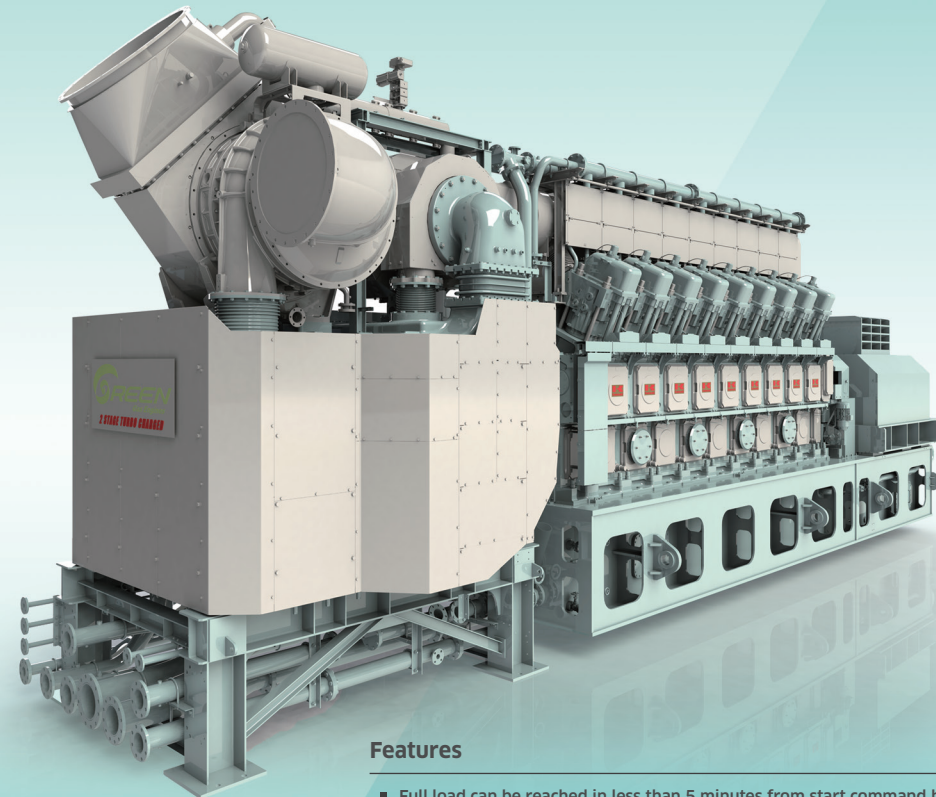


Reducing 41Nm³/h  
= 3% of fuel gas flow rate

\*Calculation condition...Power output 7,800kW  
Fuel Gas: City gas 13A(LHV 40.6MJ/Nm³)



**2021**  
Kawasaki  
Ecological Frontiers  
S class



### Features

- Full load can be reached in less than 5 minutes from start command by rapid start up system
- High efficiency also in partial loads leads energy saving performance in wide partial load range
- Modularized 2-stage turbo charger equipment is separated from engine which realize the compact and robust system without any risk from engine vibration

### Product Description

Newly developed high performance 8MW class Green Gas Engine KG-18-T, 2-stage turbo charging system installed.